

# AlertWave

*Smart Wireless Solutions for Today's Campus*



Whether you are a large university seeking a comprehensive packaged solution or a community college looking for a detailed solution on a specific budget, Visiplex's portfolio of emergency public notification, overhead PA messaging, two-way call station communication and master time synchronization products is the smart choice. The AlertWave product line offers campuses with the latest and most innovative way to incorporate mass communication and alert solutions throughout any sized facility, providing the benefits of improved safety, increased productivity and reduced maintenance costs. The AlertWave system is a reliable and cost effective alternative solution when compared to old and traditional wired communication systems.

The AlertWave series can provide Colleges and Universities with:

## Wireless Emergency Notification



Campuses have a great need to notify and communicate with students and staff in the event of an emergency. Visiplex's AlertWave is the premier alert system for Wireless Emergency Notification applications, providing an effective means of audible and visual notification for virtually any campus area, regardless of size. Through instant, well-directed voice and visual messages, the AlertWave system instructs those in the immediate vicinity how to behave in a variety of emergency situations, such as campus lockdown or evacuation.

## Wireless Overhead Paging



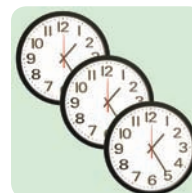
Visiplex wireless overhead paging systems provide campuses and universities with an easy way to implement overhead paging for daily communications and emergency notifications. The system can function with multiple indoor/outdoor zones and provides the operator the ability to communicate with each specific zone or PA speaker individually. As a wireless solution, this PA system offers an easy installation, expansion and integration process with existing wired PA systems, without the need to run any wires.

## Wireless Emergency Call Stations

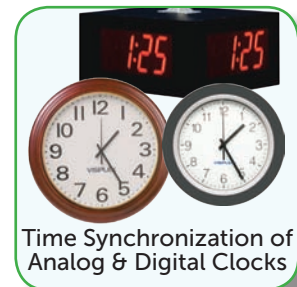


Visiplex wireless paging systems offer campuses the ability to incorporate two-way intercom stations to be used as emergency call boxes, resulting in improved safety for students and visitors by providing them two-way voice communication with security personnel. Each wireless call box station can be wirelessly monitored, supervised and acknowledged when a call is placed. As a wireless solution, this system offers an easy installation and expansion process without the need to run wires across the campus.

## Wireless Time Synchronization



Visiplex offers colleges and universities the ability to incorporate accurate, synchronized time for all of the clocks and computers throughout the facility. Visiplex offers wireless analog clocks, LED digital clocks and LED alphanumeric displays in a variety of styles and sizes to match all campus needs. The alphanumeric LED displays can function as digital clocks during standby time and can also be used to display detailed text information during a variety of emergency situations.



## One System. No Wires. Easy Installation.

### *Does Your Campus Comply with the New NFPA-72 Regulations?*

The AlertWave system allows your facility to be fully compliant with the new NFPA-72 regulations.

In 2010, the NFPA issued new rules and regulations with detailed instructions on how an emergency notification system should be constructed.

According to these new regulations, an emergency notification system must be able to provide instant audio and visual alerts to all students, staff and visitors located on-site, with specific instructions for each zone/building, explaining the emergency situation and how to behave.

Many campuses today use emergency notification systems that are based on E-mail, text messaging and/or phone message distribution. These systems are slow, can't notify everyone on-site, lack the ability to issue zone/building alerts, and have a tendency to fail during emergency situations due to cell or network line overload.

### *AlertWave - A Wireless Affordable All-In-One Solution:*

AlertWave offers a turn-key system providing emergency mass notification, campus-wide Public Address messaging, two-way emergency call station connectivity and clock time synchronization.

One of the most cost-efficient features of the AlertWave system, when compared to traditional wired systems, is the elimination of the need to run wires across the campus. This leads to simple system configuration, installation, expansion and/or relocation.

Another highlight of the AlertWave system is the ease of installation, where all that is required to add a wireless speaker or display is a standard electrical outlet or solar panel.

Grouping wireless devices into multiple zones can easily be done wirelessly from the AlertWave wireless control center.

## Emergency Mass Notification System



- Wireless campus-wide instant audio-visual notification
- Wide selection of PA speakers, LED displays & strobes
- Safe and reliable modular system design
- Able to notify all students and staff within seconds
- Can be used for daily PA announcements and bell alerts
- Easy system installation and expansion

The Visiplex AlertWave is a turnkey wireless emergency notification system that provides instant warnings and instructions to students, visitors and personnel during emergency situations to reduce confusion, injuries and casualties. In the event of an emergency on campus, the AlertWave system can instantly issue audible and visual alerts followed by live voice or pre-recorded messages with instructions on how to respond using simple and clear language.

Many campuses that utilize E-mail text messaging and/or phone message distribution as their mass notification system are facing the disadvantages of a slow notification process, the inability to notify everyone on campus (using a calling database), inability to provide zone/building specific alerts and the tendency for these type of systems to fail (lines overload) during emergency situations.

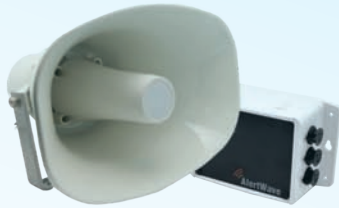
The AlertWave system can initiate voice and visual alerts to thousands of wireless speakers, strobes and alphanumeric displays within seconds, notifying all students, visitors, and personnel members in each campus building with area/zone specific messages regarding what just happened and instructions on what procedures to follow.

The AlertWave system is based on a modular design where each wireless remote device (such as a PA speaker, strobe light, call station or alphanumeric LED display) is fully independent and if one device is damaged, all of the other devices will keep working. In case of power outages, these devices can utilize an internal battery backup. The AlertWave system can provide a full functionality report for each remote device, making the overall system maintenance easy and cost effective.

During regular daily activity and non-emergency situations, the AlertWave system can function as a powerful wireless PA and messaging system, utilizing multiple indoor/outdoor zones with the ability to communicate with each specific zone or PA speaker individually. The AlertWave system offers many upgrades and options such as wireless emergency call boxes, remote device supervision, integrated power backup, secured communication modes, solar power packages and more.



## Wireless PA Paging System



Wireless Outdoor  
Horn Speakers



Wireless PA Speakers



Wireless Ceiling  
Speakers



Wireless Paging Controller

- Wireless overhead paging throughout the facility
- Wide selection of indoor/outdoor speakers and horns
- PA speakers can be used for break bell alerts
- Instant voice notifications during emergency situations
- Easy system installation and expansion
- Variety of radio transmitters to match any campus size

Visiplex wireless public address systems provide colleges and universities with an easy way to incorporate a powerful overhead paging system for daily and emergency announcements throughout any sized campus area. The system is based on a fully modular design where only an AC outlet (or Solar panel for outdoor installations) is required for each wireless speaker/horn to operate.

Colleges and universities needing to replace or expand their existing Public Address system can easily accomplish this task by adding indoor or outdoor wireless speakers and horns. The Visiplex PA system offers easy installation and cost effective integration without the need to run any wires.

The Visiplex PA system has the ability to communicate with each zone, building or specific classroom PA speaker. Each wireless speaker/horn can be a member in multiple zones/groups to provide full overhead paging flexibility to match a variety of situations.

Visiplex provides a variety of wireless speakers to match any type of indoor or outdoor application. Speakers can come with an optional built-in power backup battery for uninterrupted operation during power outage situations. Special supervision features provide the main paging controller with the ability to wirelessly verify the functionality of each wireless speaker and report any malfunctioning devices, making the system maintenance easy and simple.

The Visiplex overhead paging system offers additional wireless options for even more productivity improvement, such as: wireless emergency notifications, two-way call station communications, break bell alerts, time synchronization, text messaging to alphanumeric LED displays, remote activation of wireless strobe lights & sirens, interface to the local phone system, and more.

## Wireless Time Synchronization System



Wireless Analog Clocks



Wireless Digital Clocks



Wireless Alphanumeric LED Displays &amp; Clocks



Wireless Time Synchronization Controller

- Wireless time synchronization throughout the facility
- Wide selection of Analog and Digital Clocks
- System can be expanded to provide PA paging
- Accurate time source from a GPS receiver or network
- Variety of radio transmitters to match any facility size
- Easy system installation and expansion

College campuses have a great need to synchronize their clocks, computers, bells and other time-sensitive equipment through one accurate time source to gain the benefits of improved productivity and reduced maintenance costs.

Using a powerful radio transmitter, the Visiplex wireless clock system sends an RF signal with accurate time information to wirelessly synchronize all the system clocks and time receivers, covering any single or multi-building campus area.

The time source to the system main controller can be obtained from a GPS receiver or other local accurate time sources, such as a PC network.

Visiplex offers analog clocks, LED digital clocks and LED alphanumeric displays in a variety of styles and sizes to match all campus needs. As a modular system, an unlimited number of clocks can be added at any time without the need for additional programming or upgrades to the main controller.

The Visiplex wireless time synchronization system is easy to install and allows clocks to be added or relocated without the need to run any wires. Analog clocks come with the option of using an AC power source or long-lasting batteries while all digital LED clocks and displays need an AC outlet to operate.

As all Visiplex wireless systems, this clock system can be expanded to include wireless PA speakers/horns, emergency two-way call stations, alphanumeric LED displays and strobe lights to provide additional important campus communication tasks, such as: indoor/outdoor overhead paging, wireless two-way communications, alphanumeric text messaging and scheduled break bell alerts.

PAGING CONTROLLERS



Visiplex offers a variety of wireless paging controllers that can communicate, control and synchronize thousands of wireless receivers such as Public Address speakers, LED displays, intercom stations, two-way radios, pagers, synchronized clocks, strobe lights, sirens and other wirelessly controlled devices.

WIRELESS PA SPEAKERS



Visiplex offers a variety of cost effective wireless public address speakers, controllers and amplifiers to meet the requirements of most PA messaging systems. Visiplex speakers are designed to be used in applications such as in-house paging, bell alerts, emergency notification, public safety and more.

WIRELESS CALL STATIONS



Visiplex offers unique emergency call stations for wireless two-way voice communications. These stations are simple to operate and are designed to be used by students and visitors in specific campus locations to provide a voice link with the main security office during emergency situations.

ALPHANUMERIC LED DISPLAYS



Visiplex offers a selection of alphanumeric LED displays to match any facility's needs. The wireless LED displays can also function as digital clocks and provide alphanumeric text messaging when needed. The wireless digital displays come in a wide variety of LED sizes, colors and formats to provide easy viewing to accommodate a large variety of application environments.

WIRELESS ANALOG CLOCKS



Visiplex offers a selection of wireless synchronized clocks to match your facility's needs. The clocks come with durable frames and lenses, easy viewing faces and will provide years of maintenance-free battery life. All analog clocks can be ordered with an optional custom logo and frame colors.

WIRELESS DIGITAL CLOCKS

# About Visiplex

Visiplex, Inc. is a U.S. based company founded in 1989. During the last 24 years, we have become recognized worldwide as a leading designer and manufacturer of wireless voice & data paging systems, wireless emergency warning systems, wireless Public Address Systems, wireless synchronized clock systems, wireless Nurse Call systems and many other application-specific wireless solutions.

Over 20,000 businesses and organizations rely on Visiplex wireless products to improve operating efficiencies, emergency response times, and the ability to save costs. Visiplex end-users are campuses & universities, government facilities, military bases, hospitals & medical centers, cities & municipalities, schools, shopping malls, industrial plants, commercial facilities, assisted living centers and more.

Our company success is attributed to the ability of providing high-quality, innovative wireless solutions, backed by on-going engineering, sales, and customer service.



Visiplex offers a selection of wireless synchronized digital clocks to match your facility's needs. The wireless LED clocks come in a variety of sizes, colors and formats for easy time viewing and to accommodate a wide variety of application environments.

WIRELESS RECEIVERS



Visiplex paging systems offer a wide selection of wirelessly controlled devices and paging

receivers to provide remote activation and data monitoring for a variety of wireless applications. The wirelessly controlled devices can control sirens, strobe lights, electrical locks, dome lights and many other electrical devices.

PAGING ACCESSORIES



Visiplex offers a selection of add-ons to complete its wireless paging systems with accessories such as compact radio transmitters, pendant transmitters, pagers, remotely activated switches, dry-contact alarm input expansion units, radio antennas, antenna mounting kits, and more.

For more product information, please visit our website at: [www.visiplex.com](http://www.visiplex.com)