



VS4800 - Desktop Wireless Paging Controller



TS4142



WPT-01



VP-4



VS1502



VNS2200

Key Features:

- **Wireless Public Address Messaging**
- **Instant Audible and/or Silent Visual Alerts**
- **Facility-Wide Wireless Time Synchronization**
- **Automatic Day Light Savings Time Adjustment**
- **Alphanumeric Messaging to Pagers and Wireless LED Displays**
- **Monitors 24 Dry Contact Alarm Points for Automated Messaging**
- **Wireless Scheduled Bell or Tone Activation***
- **Monitors Wireless Push Buttons and Sensors for Instant Personnel Notification***
- **Two-Way Wireless Intercom Communications***
- **Sunrise/Sunset Remote Switch Activation**
- **Improves Response Time During Emergencies**
- **Requires Minimal Training with Easy Installation**

* Optional Feature

The **VS4800 Desktop Wireless Paging Controller** is designed to control and activate visual, audible and alphanumeric wireless devices, such as strobe lights, public address speakers, sirens, intercom wall stations, voice pagers, alphanumeric pagers and alphanumeric LED displays. In addition, the VS4800 can provide a wireless time reference signal required to synchronize wireless analog and digital clocks. The time reference transmitted by the VS4800 can be retrieved from a PC computer clock or from a GPS satellite system using an optional GPS receiver.

The VS4800 is equipped with a full alphanumeric keyboard and graphic LCD display for simple operation and programming. It also has the ability to support 1,000 wireless devices for individual and group access.

The VS4800 offers up to four RS-232 serial ports allowing integration with third party building PA or fire alarm interfaces. In addition, the VS4800 provides 24 dry contact closure alarm points and 20 programmable fast key messages via the keyboard keys.

The wireless alerts can be initiated by the user from the VS4800 keyboard, the optional telephone interface or the optional microphone. Automated alerts can be initiated by serial communication protocols, activation of a dry contact closure alarm point, the optional pre-programmed tone/bell event schedule or the wireless push button and sensor interface.

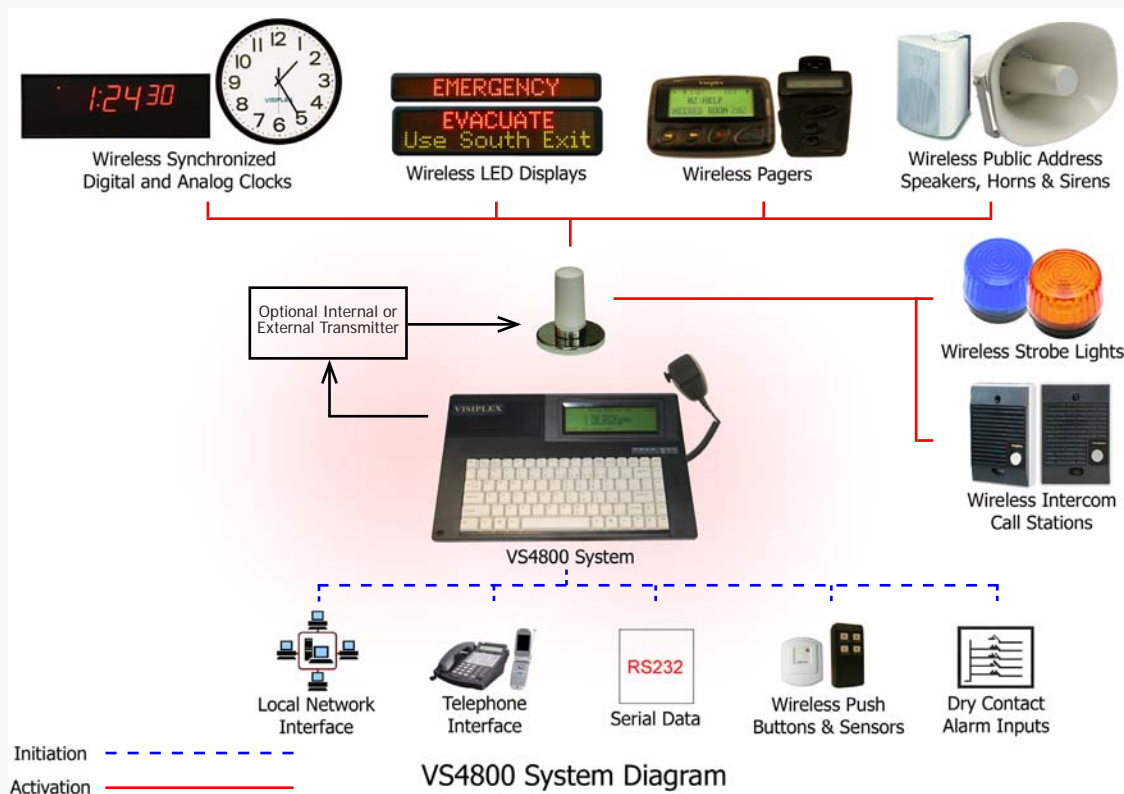
For applications that require two-way communication, the **VNS2261** and **VNS2263** intercom options allow the **VNS2200** to provide a two-way communication between the VS4800 and an intercom wall station or emergency call box.

The sunrise/sunset remote switch control can set facility lights to on or off according to day light hours in order to provide efficient energy saving.

The VS4800 utilizes optional radio transmitters with FCC approved frequencies and power ranging from 6 to 300 Watts, providing full RF coverage to any sized facility.

The VS4800 is fully expandable, allowing you to start with a basic system that fits immediate requirements while maintaining the ability to add future devices.

VS4800 - Desktop Wireless Paging Controller



Options, Accessories and Complementary Products:

Part Number	Description
VS2511	Schedule Bell/Tone Paging & Programming Package
VS3002	Wide Area Interface and External Modem
VS3003	Telephone Line Interface (RJ11 Input) *Up to 2 Allowed
VS3005	Hand-Held Microphone for Voice Messaging
VS3008	Free Text Messaging Software (Requires a Serial Port)
VS3009	Additional RS232 Serial Port *Up to Total of 4 Allowed
VS3011	Wireless Devices Messaging Interface for 900 MHz Wireless Devices (Requires a Serial Port and Wireless 900 MHz Receiver)
VS3012	Audio Input (AUX) for Automated Activation of Wireless Speakers from External Audio Source
VS5147	VNS2000 Professional Server for Desktop encoders (single user)
VS5148	VNS2000 Network Client/Server for Desktop encoders for multiple network users (includes 25 client licenses)

Specifications:

Dimensions	13.25" x 9.5" x 3.25" (W x H x D)	Internal Transmitter (*Optional)	
Weight	3.70 lbs.	RF Power Output	VTX-6: 6W
Power	12V DC / 3A (Using 100-240V AC)	Frequency Range	VHF (148 - 174 MHz), UHF (403 - 433, 438 - 470 MHz)
Operating Temperature	32° - 104°F	Channel Spacing	12.5 kHz or 25 kHz
Humidity	10% - 65%	Modulation	Data and Tone: +/- 3.5 kHz, Voice: +/- 3.5 kHz
Approvals	UL/CSA Listing (Power Supply)	Spurious & Harmonic	75dB
RS232 Protocols	Visiplex, TAP, Comp1 and Comp2	Telephone Line (*Optional)	
Paging Format	POCSAG, 2-Tone	Line Type	Line Level (End to End Station Level), DTMF
Serial Ports	1, Optional 3 Additional	Line Input Impedance	600 Nominal (Off-Hook)
Data Baud Rate	512, 1200, 2400 BPS	Limited Warranty	One Year Parts and Labor

*Specifications Are Subject to Change Without Notification

VISIPILEX

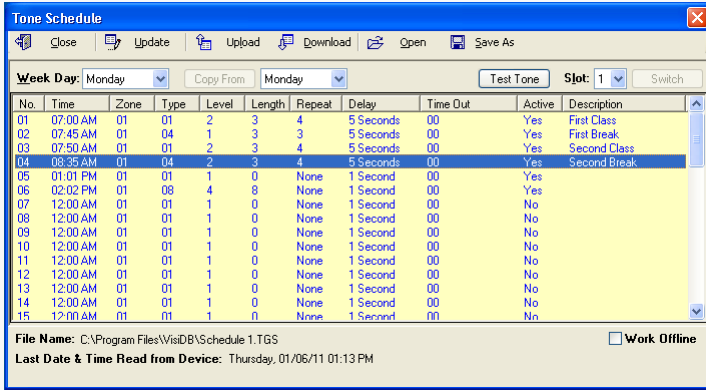
877 918-7243

www.visiplex.com

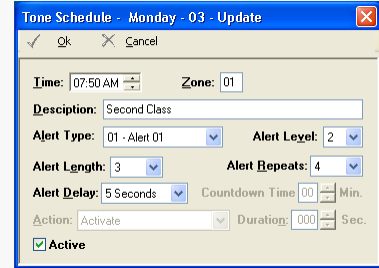
VS4800 - Desktop Wireless Paging Controller : Software & Option Details

The **VS2511** bell/tone selection and programming option allows the VS4800 to activate tones, bells or any audible alerts stored in the **VNS2200** wireless audio/visual controller's memory according to a pre-programmed weekly schedule. The weekly schedule consists of 48 daily events that can activate a respective tone, bell or audible alert on the VNS2200. The VS4800 can store up to four different weekly schedules with one active weekly schedule. The system allows the user to easily change the active weekly schedule using the programming software, VS4800 keyboard, or the optional **VS3003** telephone interface.

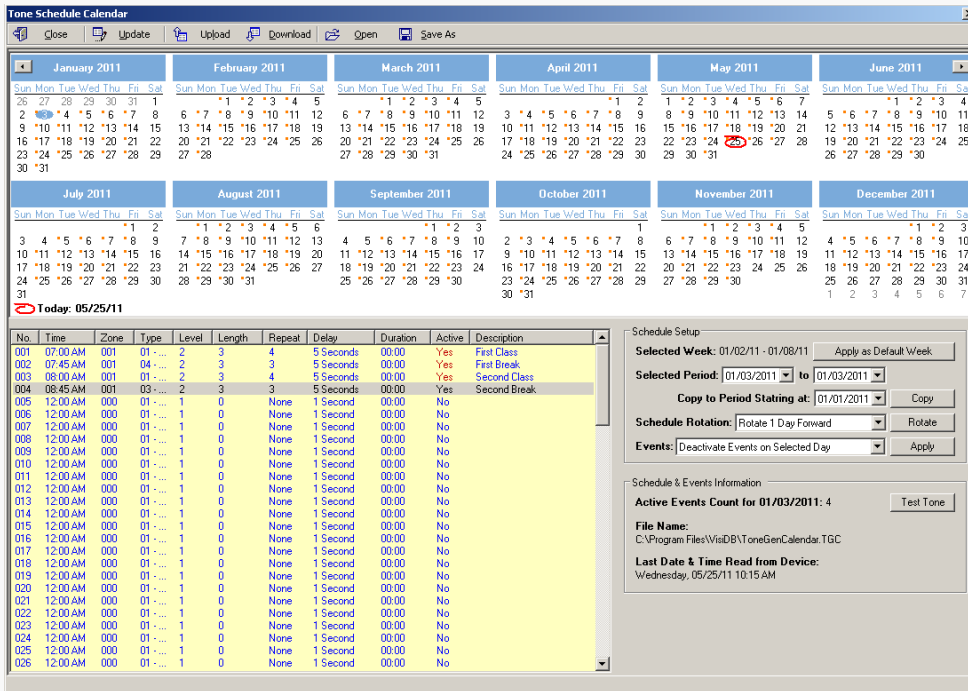
The calendar year schedule consists of 42 daily events that can activate a respective tone, bell or audible alert on the VNS2200. The calendar year schedule will allow each day of the year to be planned ahead of time (*The calendar schedule works for VS4800 Versions 3.14 and higher).



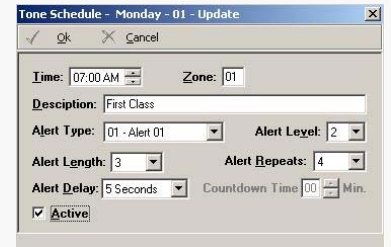
Tone Schedule (Week)



Tone Schedule Settings (Week)



Tone Schedule (Calendar Year)



Tone Schedule Settings (Calendar Year)

The **VS3002** widearea interface option allows the VS4800 to send alphanumeric messages to supported pager and cell phone subscribers of third party service providers. The message is sent to the service provider using TAP serial protocol over modem communication, allowing a nationwide coverage area.

The **VS4800** supports alert initiation and alphanumeric messaging from any telephone by dialing to the **VS3003** telephone interface (one or two can be installed). This telephone interface functions as an auto-attendant that answers the call and guides the user through the messaging process, allowing the user to send numeric and alphanumeric messages, activate audible alerts stored in the **VNS2200** memory or send live-voice to the VNS2200. The VS3003 telephone line interface option also includes 99 Alpha by Phone messages that allow the user to send alphanumeric messages using the telephone keypad by converting numeric code to a pre-programmed alphanumeric message (for example, "**05" can be converted to "Please call").

In addition, the VS4800 supports live-voice alerts using the **VS3005** hand-held microphone option allowing the user to access wireless speaker devices from the VS4800 keyboard.

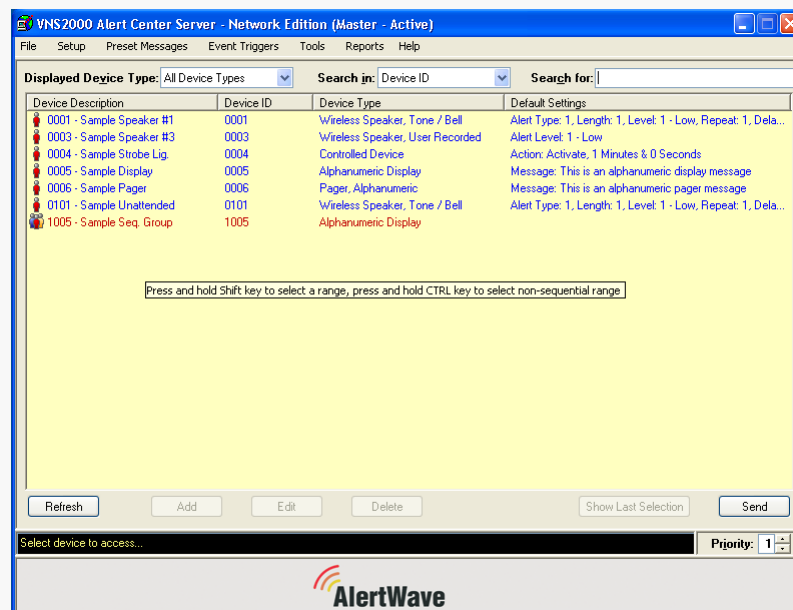
VS4800 - Desktop Wireless Paging Controller : Software & Option Details

The VS4800 is capable of analyzing data received on one of its serial ports and search the received data for pre-determined keywords using the **VS3008** freetext option. If the sought keyword is found, the VS4800 can send the received message to a pre-determined pager or LED display.

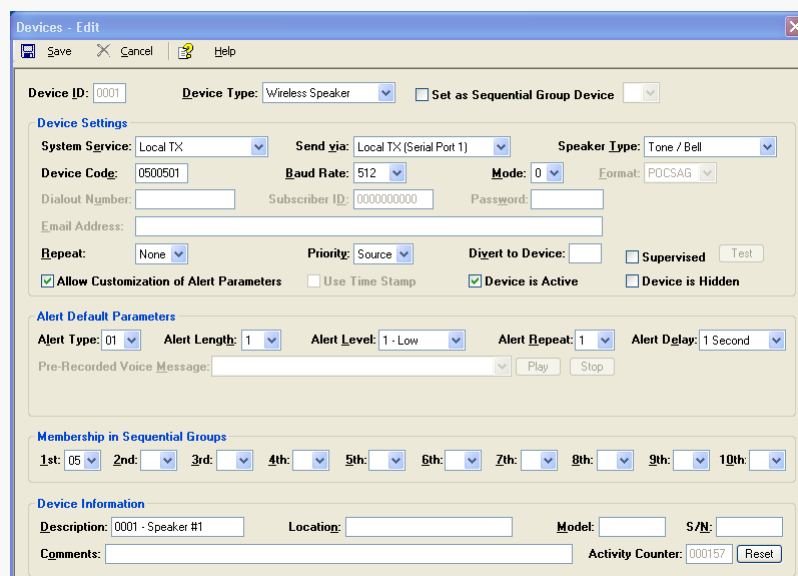
The **VS3009** additional serial port option allows the VS4800 to be equipped with up to three additional RS232 serial ports for extended serial communication capabilities and integration with multiple third party building automation and monitoring systems.

The VS4800 is also capable of responding to the activation of wireless 900 MHz transmitters or push buttons with an automated alert to public address speakers, strobe lights, sirens, alphanumeric pagers, voice pagers or LED alphanumeric displays. This functionality requires the **VS3011** wireless device interface option and a 900 MHz wireless receiver to analyze the signal received from the wireless push button or transmitter and initiate an automated alert according to the programming in the VS4800 database.

The optional **VNS2000** server software (**VS5147** or **VS5148**) extends the VS4800 capabilities and provides a user-friendly Windows based interface and an event archiving feature required for reporting purposes. In addition, the VNS2000 server software includes the visual control panel that provides a visual presentation of system events and allows the user to add indicators to visualize the status of dry contact closure alarm points and 900MHz wireless push buttons or transmitters.

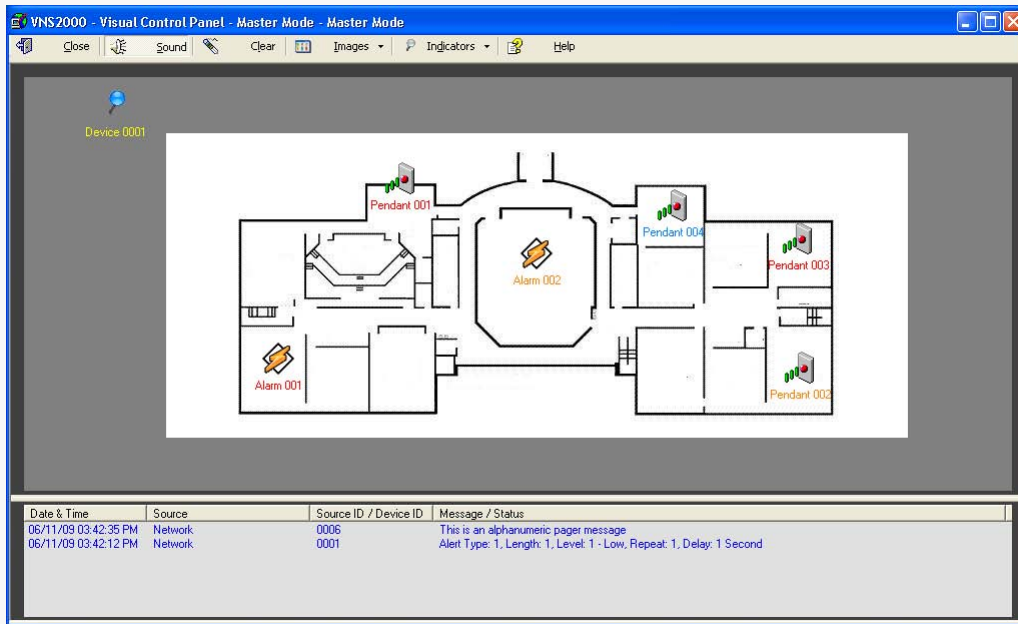


Alert Center Server - Main Screen

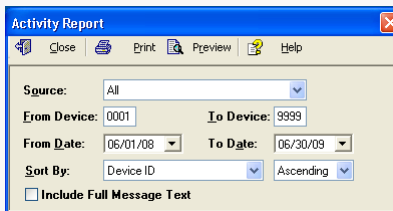


Devices Settings

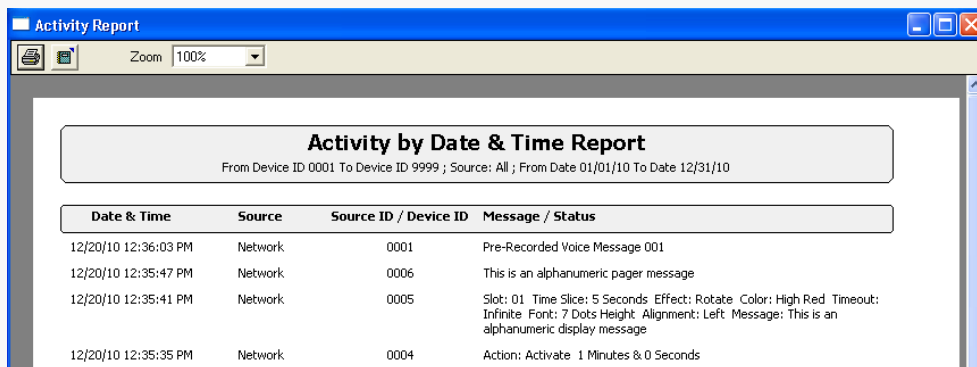
VS4800 - Desktop Wireless Paging Controller : Software & Option Details



Visual Control Panel



Activity Report Settings



Activity Report Details

VS4800 - Desktop Wireless Paging Controller : Software & Option Details

When the VS4800 is used with the VNS2000 server software, it receives all inputs and indications from connected systems and processes this information according to the programming of its internal database (if any). In addition, the VS4800 reports dry contact closure (alarm points) activity, 900MHz wireless transmitter activity and paging activity to the VNS2000 server software (**VS5147** or **VS5148**) for additional processing and event archiving. The additional processing provides extended flexibility with automated alert initiation including a daily and hourly based activation plan.

Alarm Points - Alarm Point 001 - Edit

Save Cancel Help

Send to Device: 0005 Repeat Time: None

Message Text: Local Alarm #1: Building 1 - Floor 5

Device Additional Status

Report Alarm Cancel to Device: 0004

Report No Activity to Device: 0006 No Activity Timeout (minutes): 1440

Alarm Point Description: Building 1 - Floor 5

Activation Plan

Set Plan to: Active All Day in Following Days

Sun Mon Tue Wed Thu Fri Sat

From Hour: 12:00 AM To Hour: 12:00 AM

Page Priority: 1 - Min

Use Device Default Settings

Active

Alarm Points Settings

900 MHz / UHF Wireless Pendants - Pendant 001 - Edit

Save Cancel Help

Pendant Code: 0000101 Send to Device: 0006 Repeat Time: None

Message Text: Local Pendant 001

Device Additional Status

Report Call Cancel to Device: 0003

Report No Activity to Device: 0006 No Activity Timeout (minutes): 1440

Report Low Battery to Device: 0006

Momentary Switch Pendant - Call Cancellation by Pendant Code: 0000201

Pendant Description: Pendant 001

Activation Plan

Set Plan to: Always Active

Sun Mon Tue Wed Thu Fri Sat

From Hour: 12:00 AM To Hour: 12:00 AM

Page Priority: Source

Use Device Default Settings

Active

Wireless Pendants Settings

The **VNS2000** client software (**VS5143**, used with **VS5148**) provides network access to the paging system from any network PC allowing Windows OS users to initiate alerts from their PC and forward their emails to a wireless device such as a pager or alphanumeric display.

Email Forwarding & User Information

Save Cancel Help

User Information: John Smith

Append Information to

Beginning of Message End of Message

Activate Email Forwarding

Forwarding Type: Forward to Device 0001

Messages Keyword Filter: ***J589***

Messages Sender Filter: jane.doe@domain.com

Include Email Header Details in Message

Check for Unread Messages Every 005 Minutes

Force Email Download

E-Mail Forwarding & User Information

VNS2000 Client

File Setup Help

Displayed Device Type: All Device Types Search in: Device ID Search for:

Device Description	Device ID	Device Type	Default Settings
0001 - Sample Speaker #1	0001	Wireless Speaker, Tone / Bell	Alert Type: 1, Length: 1, Level: 1 - Low, Repeat: 1, Dela...
0003 - Sample Speaker #3	0003	Wireless Speaker, User Recorded	Alert Level: 1 - Low
0004 - Sample Strobe Lig.	0004	Controlled Device	Action: Activate, 1 Minutes & 0 Seconds
0005 - Sample Display	0005	Alphanumeric Display	Message: This is an alphanumeric display message
0006 - Sample Pager	0006	Pager, Alphanumeric	Message: This is an alphanumeric pager message
0101 - Sample Unattended	0101	Wireless Speaker, Tone / Bell	Alert Type: 1, Length: 1, Level: 1 - Low, Repeat: 1, Dela...
1005 - Sample Seq. Group	1005	Wireless Speaker, Tone / Bell	Alert Type: 1, Length: 1, Level: 1 - Low, Repeat: 1, Dela...

Refresh Show Last Selection Send

Select device to access... Priority: 1